

Sullivan Drive – At the Intersection of Gray and Green Stormwater Infrastructure

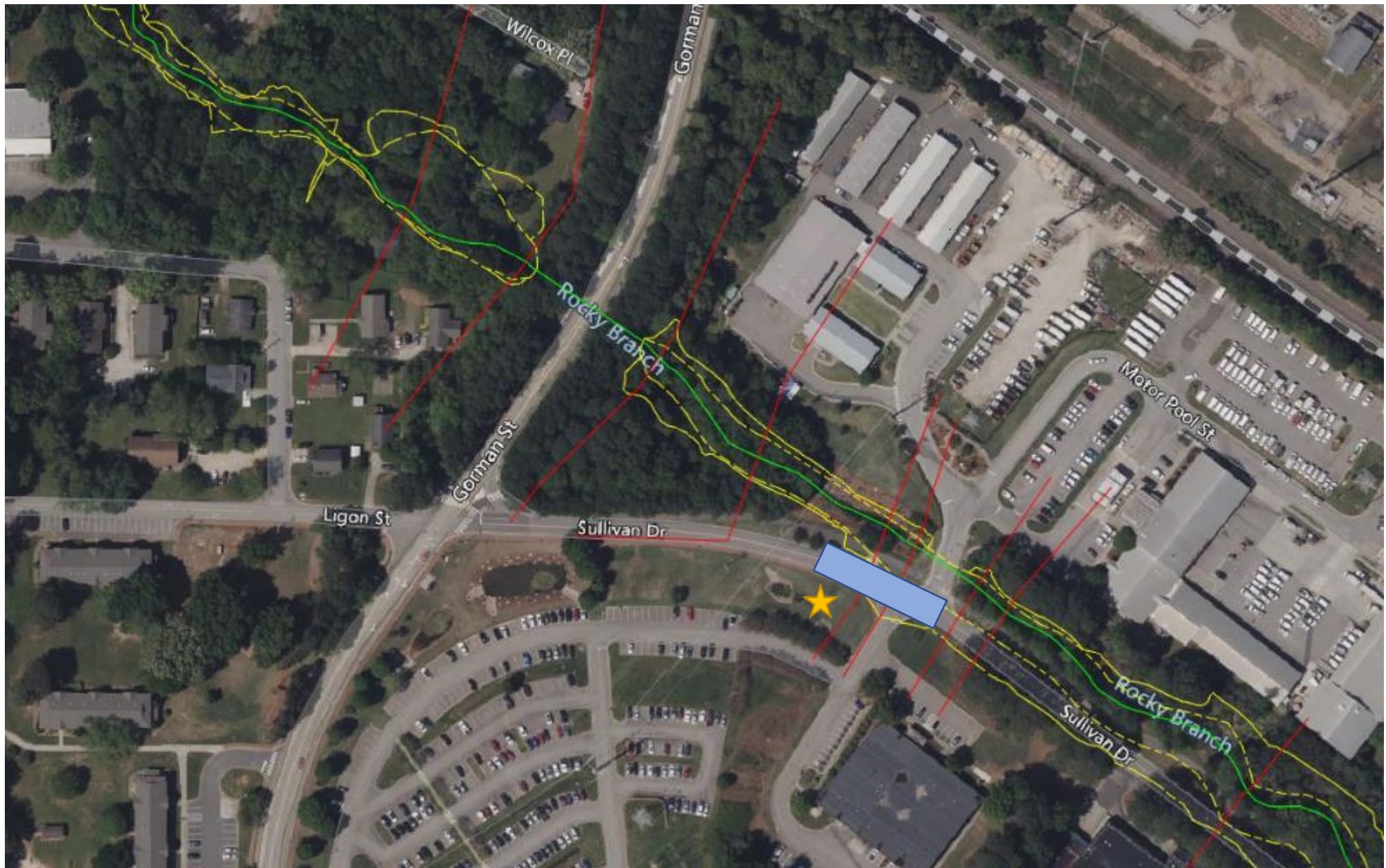


Gray



Green



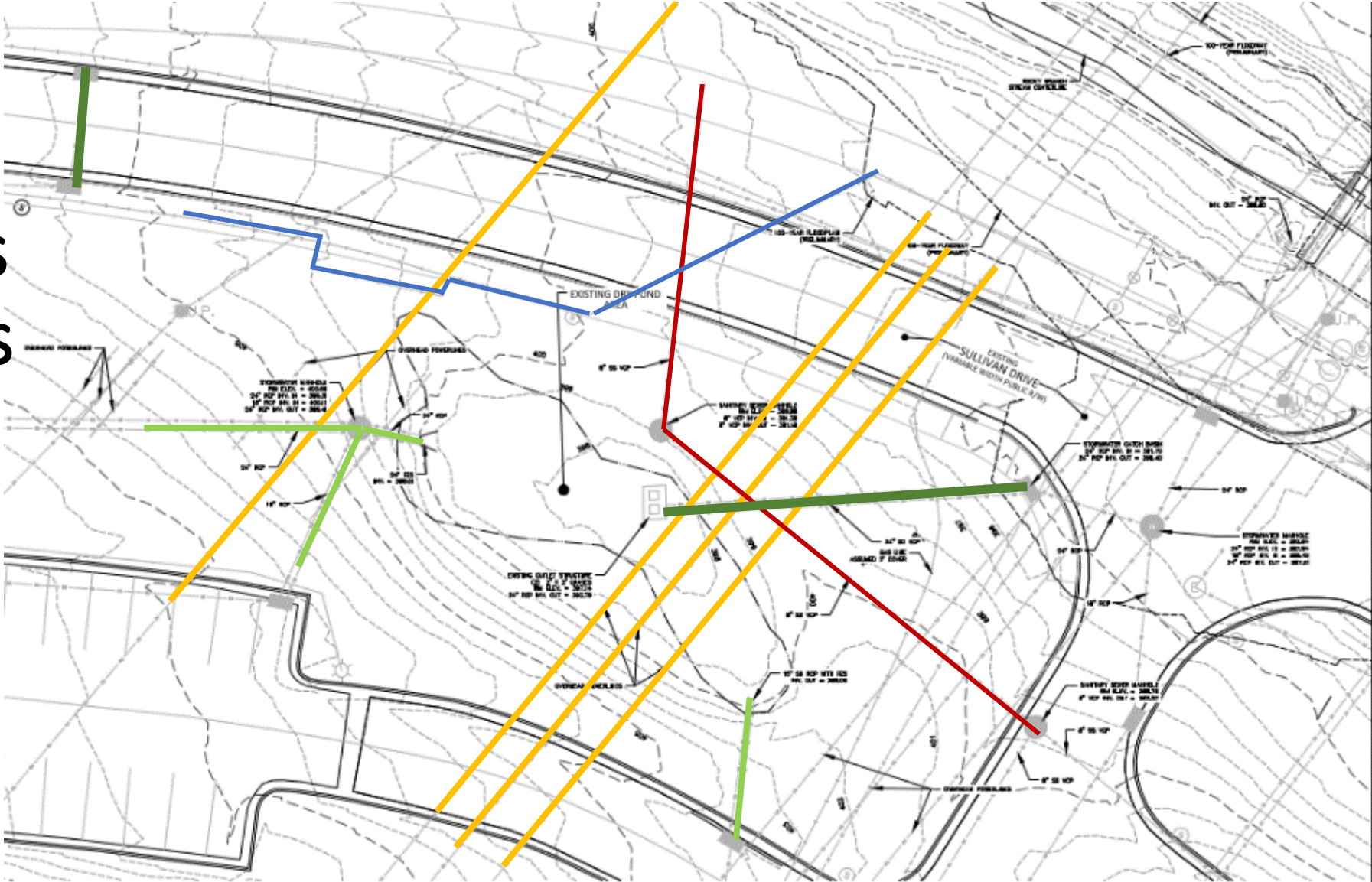


Pre-Project Conditions

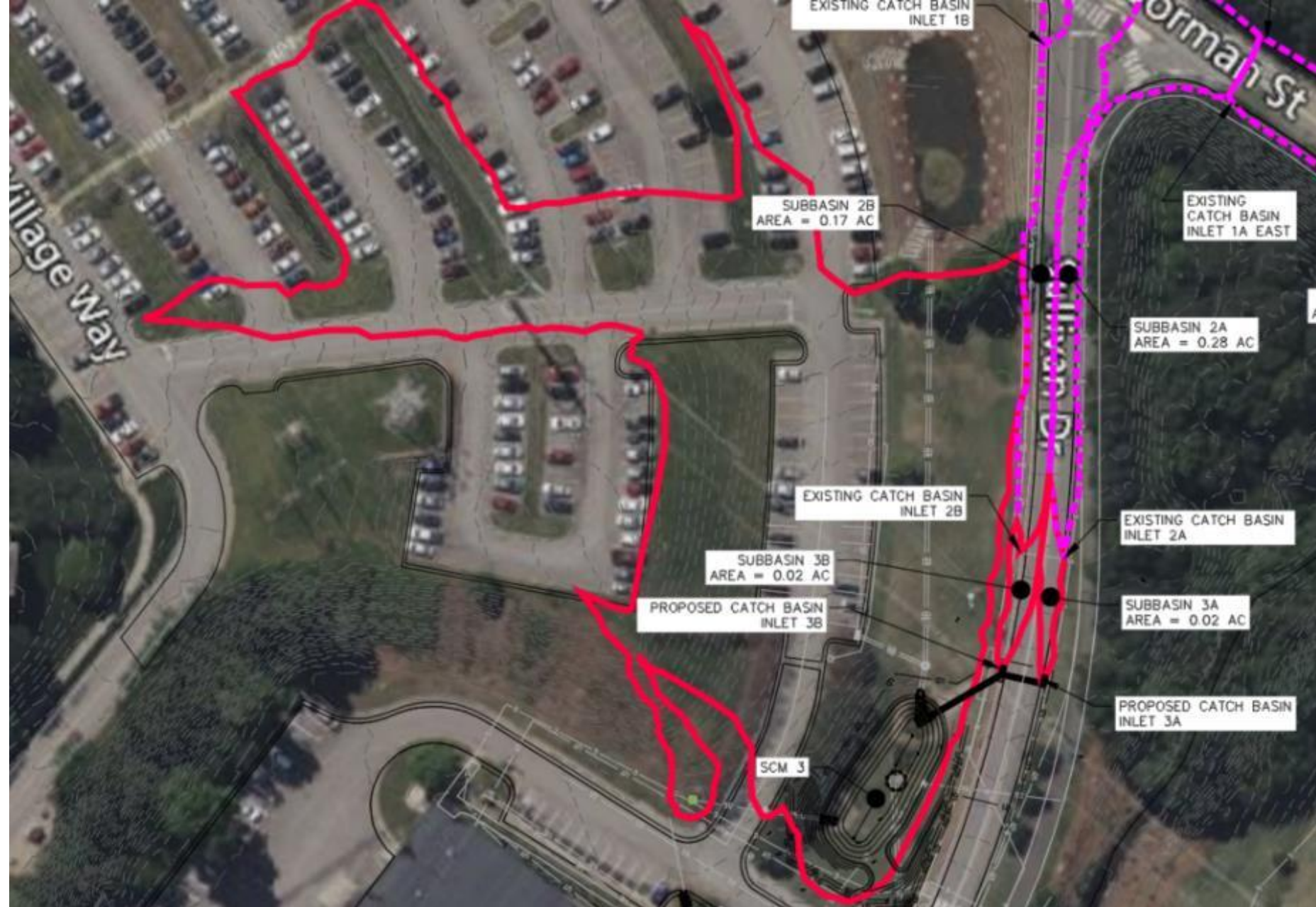
- Excess road drainage bypass causing flooding along Sullivan Dr during flashy storm events.
- Ineffective SCM



The challenges of retrofits

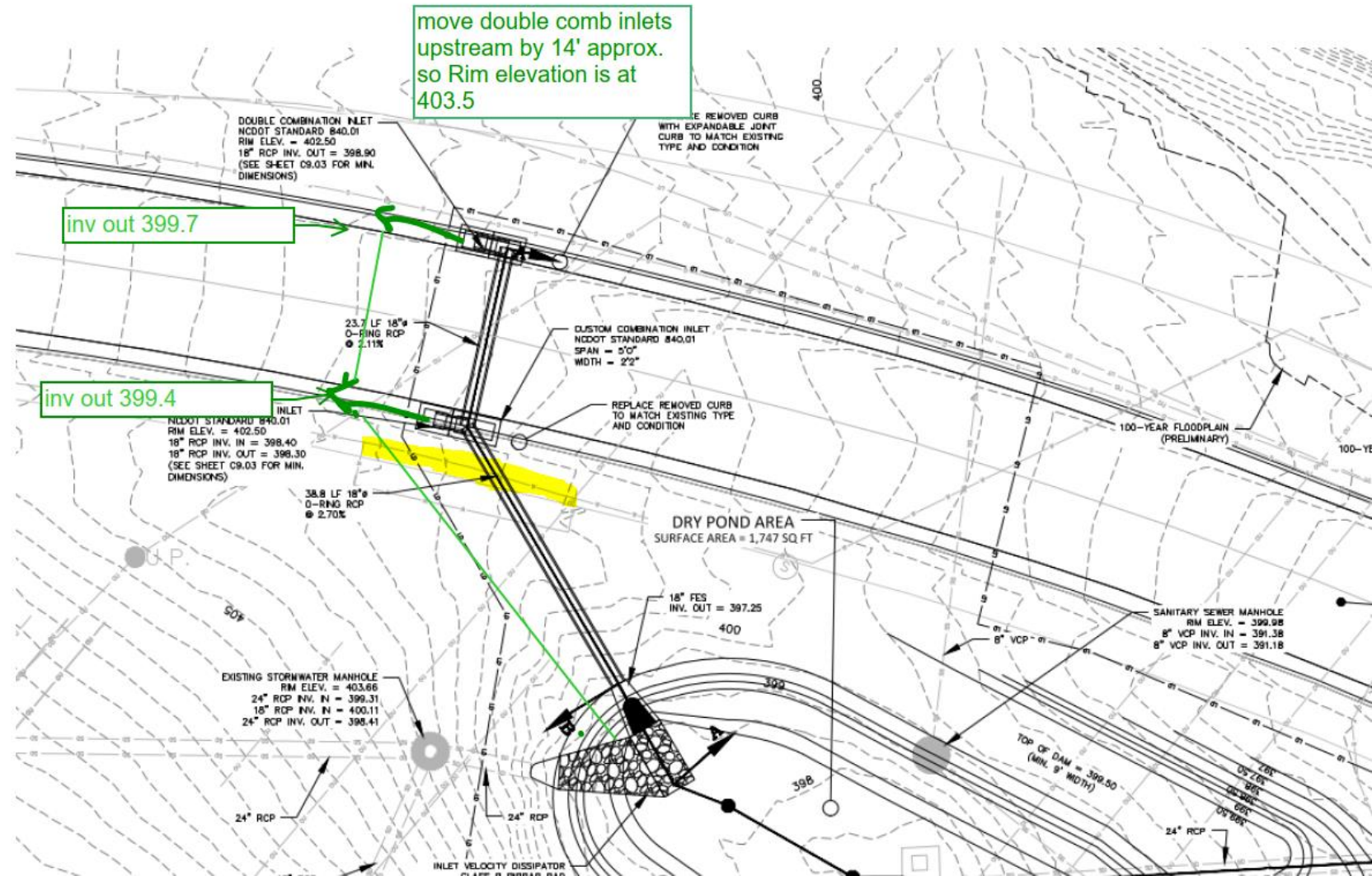


Upstream Drainage

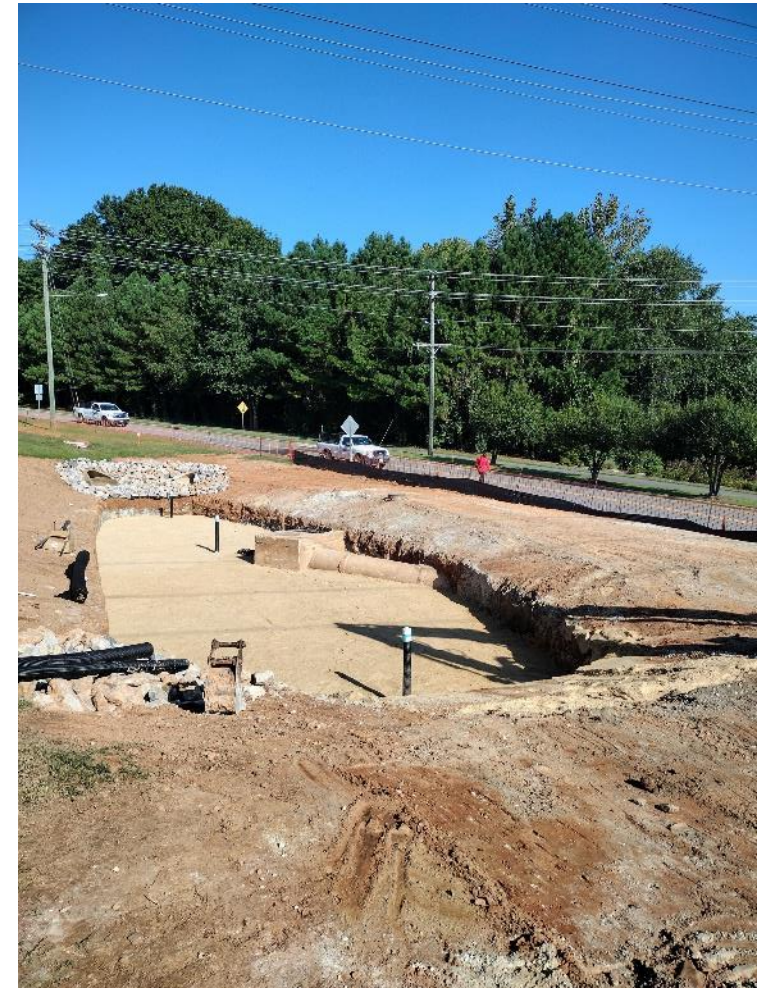


Construction Level Flexibility

- Utility conflicts
- Main water line







Results



Two weeks after construction wraps up...

